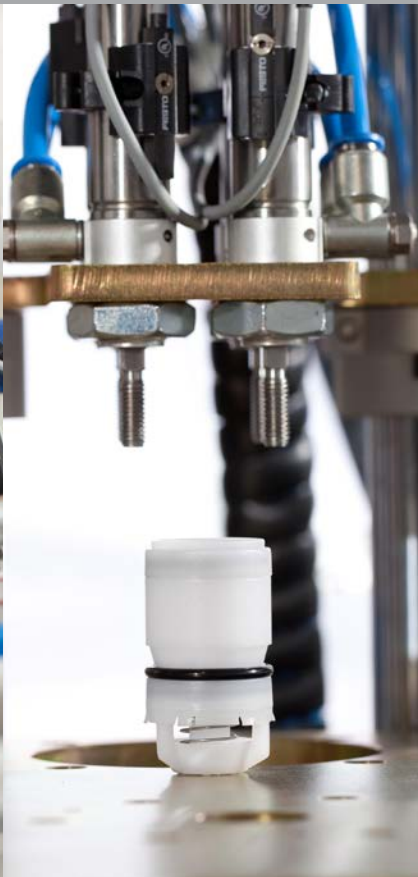




# GULF

engineered rubber and plastics

## Check Valves



Designed to make a difference



# Check valve innovation

At Gulf Rubber, we develop intelligent check valve technology. Our business is driven by the needs of our customers, and we focus on meeting the precise needs of your application.

Whether you require a standard valve - or something completely custom-designed - we can deliver superb performance.



## Working with Gulf is easy and efficient

### 1 Confirming your brief

Our knowledgeable sales team will work closely with you to determine the exact requirements of your product. We'll also use computer-aided modeling, to test the workings of your product before any physical parts are built.

### 2 Global communication

As a global company, we employ technology such as video conferencing to liaise with clients throughout the world. We ensure a clear flow of information, so speed to market is achieved.

### 3 Rapid prototyping

For more complex products, Gulf can supply the latest in 3D printing technology in order to prove concept of design, and product fit/function.

### 4 Fast lead times

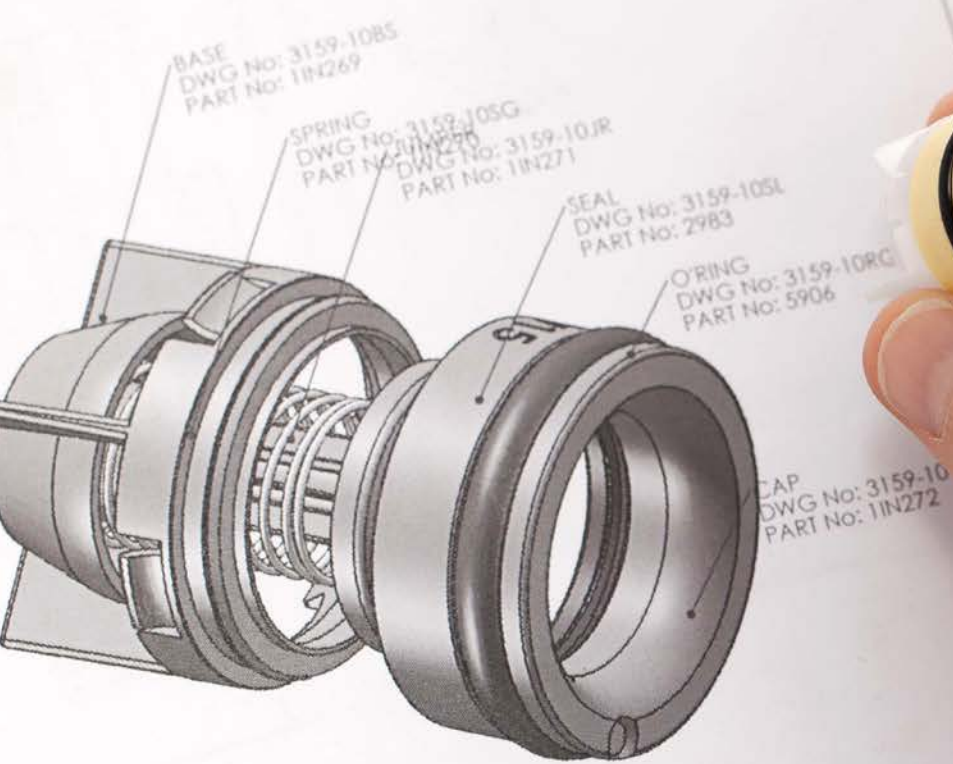
We understand market realities, and will work closely with you to ensure your product is available by your deadlines.

### 5 Cost competitive

Our company infrastructure provides a number of cost efficiencies that we can pass on to our clients. These include: bulk buying of raw materials, rapid in-house testing, and cost-efficient production in our own factories.



7	B	Y	10
DATE	BY	CHKD	APPD
07/04/10	A		MS
17/08/10	B		MS
REVISION		SERIAL ISSUE	
		P/19096 WAS 2984	



NOTE: MUST COMPLY WITH AS2845.1, SECTIONS 3.6.4, 3.6.5 & 7.4

TOLERANCES UNLESS SPECIFIED		DIN 16901-SERIES 2	
DIN 16901 SERIES 2		± FIXED	± CLOSURE
ABOVE	UP TO & INCL		
0	1	0.06	0.16
1	3	0.07	0.17
3	6	0.08	0.18
6	10	0.09	0.19
10	15	0.10	0.20
15	22	0.11	0.21
22	30	0.13	0.23
30	40	0.15	0.25
40	53	0.17	0.27
53	70	0.20	0.30

PART NAME	OV15 HT CHECK VALVE	PROD. No.:	2981	SIZE	A3
DRAWING No.:	3159-10CV15	SCALE	6:1	REV	B
MATERIAL	REFER PART DWGS	GULF RUBBER		Australia New Zealand	
3RD ANGLE PROJECTION DIMENSIONS IN MILLIMETRES DRAFTING STANDARD - AS1100		COPYRIGHT RESERVED		PAGE 1 OF 1	
8		9		10	

5

# What we can do for you

As a customer of Gulf, you never have to settle for a check valve that's 'near enough'. We guarantee to provide the solution that fits your exact requirements - both now, and into the future.

## Temperature Resistance



By selecting different polymers, Gulf can produce check valves for specific high or low temperature applications. (This includes both our standard and customized products).

## Fluid Resistance



Gulf's standard check valve product is approved to international potable water standards. For more aggressive mediums, our design team can recommend alternative materials.

## Adaptors / Housing



No valve is too big or too small. Whatever type of housing/adaptor you require, Gulf can provide customized dimensions to fit.

## Custom Opening



By working closely with our partner suppliers, we have the flexibility to change spring rates in production. This lets you achieve the exact flow rate required for optimum water saving.





# Testing and approval

As you'd expect, all Gulf valves undergo a rigorous testing and approvals process. Before they reach you, your products are validated with the following tests run in Gulf's state-of-the-art test facilities:

## In-house testing



Gulf provides in-house testing of key properties for long-term performance. We can test for factors such as head loss, cycle life, and flow rate for the valve.

## Range of plastics



Our check valves can be manufactured in a wide range of thermoplastics, including materials with international potable water approvals. We also offer in-house compound development, to optimize performance in unique applications.

## Seal material



Gulf has the ability to change the seal medium, for applications where silicon is not suitable. We can also provide in-house testing for stress relaxation, heat/fluid ageing, ozone and chloramine resistance.

## Colour coding



Need something a little different? Gulf even offers a choice when it comes to colour. We can produce a complete check valve in your specified colours and materials.

## Our approvals

Gulf has developed many elastomeric and thermoplastic materials for use in potable water. We can provide a wide variety of compounds that have approvals in Europe, S.E Asia and the US. To simplify the process for our clients, where required, we can provide a single material that will meet the potable water requirements in many different countries.





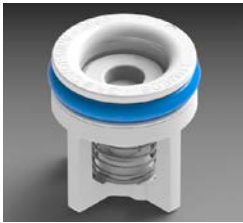




# Gulf Check Valves: Standard Range

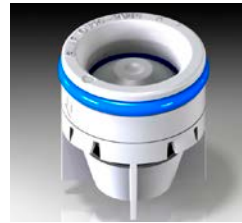
With our experience supplying industries around the world, Gulf has created a Standard range of the most commonly used check valves. Specifications include:

## OF10



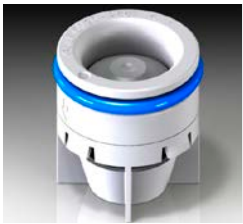
<b>Opening pressure:</b>	3 Kpa	0.4 Psi
<b>Service temperature:</b>	65 Deg C	150 Deg F
<b>Max Temperature:</b>	80 Deg C	175 Deg F
<b>Service pressure:</b>	10 Bar	150 Psi
<b>Max pressure:</b>	15 Bar	220 Psi

## OF15



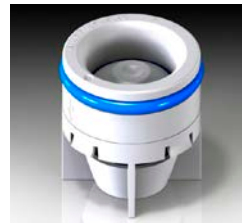
<b>Opening pressure:</b>	3 Kpa	0.4 Psi
<b>Service temperature:</b>	65 Deg C	150 Deg F
<b>Max Temperature:</b>	80 Deg C	175 Deg F
<b>Service pressure:</b>	10 Bar	150 Psi
<b>Max pressure:</b>	15 Bar	220 Psi

## OF20



<b>Opening pressure:</b>	3 Kpa	0.4 Psi
<b>Service temperature:</b>	65 Deg C	150 Deg F
<b>Max Temperature:</b>	80 Deg C	175 Deg F
<b>Service pressure:</b>	10 Bar	150 Psi
<b>Max pressure:</b>	15 Bar	220 Psi

## OF25



<b>Opening pressure:</b>	3 Kpa	0.4 Psi
<b>Service temperature:</b>	65 Deg C	150 Deg F
<b>Max Temperature:</b>	80 Deg C	175 Deg F
<b>Service pressure:</b>	10 Bar	150 Psi
<b>Max pressure:</b>	15 Bar	220 Psi

## Standard Check Valves available ex-store

Need a reliable supply of valves, right away? Gulf has Standard check valves available ex-store. Contact us for minimum order requirements.

## All check valves can be customised

Because we have our own production facilities, Gulf can easily adapt all our Standard products to meet your specific needs. We can customise your product for spring rate, opening pressure, seal material and more.

# Talk to us today about how we can improve your products

When it comes to check valves, Gulf simply gives you more choice. To find out how we can help your business, talk to your local Gulf team. We look forward to providing you with exactly the right solution - and delivering the best quality, at a competitive price.

## **Jason Steele**

European Sales Manager

Mobile: +39 348 468 3927

Phone: +61 (0)2 9772 4877

Email: [jasons@tumedei.it](mailto:jasons@tumedei.it)

## **Shaun Spacey**

Product Development Manager

Mobile: +64 (0)2 134 5924

Phone: +64 (0)9 582 0420

Email: [davidm@gulf.com.au](mailto:davidm@gulf.com.au)







[www.gulfrubber.com](http://www.gulfrubber.com)

Designed to make a difference